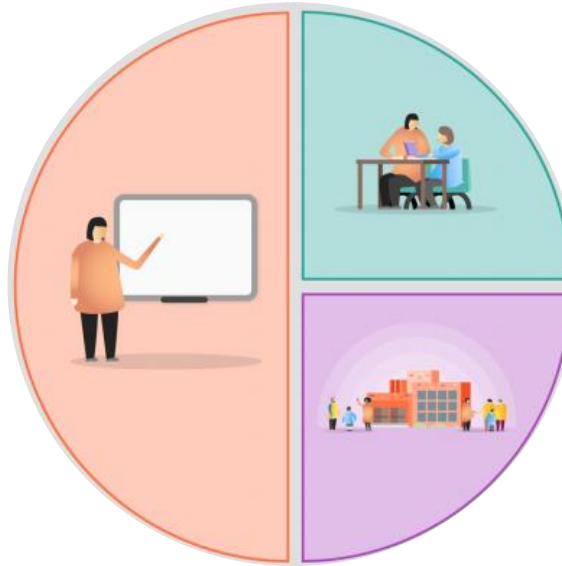




Teaching:

- **Literacy Coordinator** to ensure students are supported in this fundamental area, delivering CPL and intervention.
- **EAL Coordinator** providing CPL, supporting students and organising coaching.
- **Detailed curriculum plans** allowing staffing to build on prior learning and provide appropriate challenge.
- **'Wollaton way'** routines ensure clear and consistent classroom expectations, minimising low level disruption and allowing students to engage in learning.
- **CPL sessions** take place within the school timetable with a focus on Literacy and Inclusion.
- **Departmental meetings** to allow staff to collaboratively develop their pedagogy.
- **ALT Subject Leaders** support the sharing of best practice between Academies.
- **Common Assessment Framework** allows staff to evaluate student progress against students across ALT.
- **Data Analysis** by SLT, Heads of Subject and Year Leaders allows appropriate support and interventions to be put in place.
- **Foundation Learning** pathway provides bespoke teaching for the needs of all students.



Targeted academic support:

- **Literacy Interventions:** whole-class reading, use of the Bedrock online platform, phonics, literacy and fluency groups in Years 7 and 8, as well as targeted 1:1 intervention.
- **Numeracy Interventions:** Times Tables Rock Stars, Number Rolling, afterschool support classes in Years 7 and 8.
- **Academic Coaching:** supporting students in English and Maths through targeted small group and 1:1 sessions.
- **Timetabled intervention sessions:** for targeted Year 11 students, taking place in tutor time, lunchtime, after school and during holidays.
- **Holiday revision classes:** for Year 11 students.
- **Online revision materials:** BWA revision website, Hegarty Maths, Sparx Maths, Seneca, Educake, Bedrock and Kerboodle all provided

Wider strategies:

- **Non-teaching Year Leaders** provide full-time support with pastoral issues and address barriers to learning including attendance, safeguarding, attitude and behaviour.
- **Free breakfasts** for all students.
- **Enrichment Programme:** for year 7 students.
- **CEIAG:** priority access to programmes and workshops; careers appointments for students in Year 11
- **Humanutopia, IntoUniversity and Ambition Nottingham Sutton Scholars** develop and encourage students.
- **Uniform and equipment** provision and support for students.